

Clearabee Reporting 2023

Environment and Sustainability
**Annual
Report**

January 1st 2023 – December 31st 2023



Clearabee 

Tackling Climate Change

The planet and the environment has always been at the forefront of the Clearabee business and will continue to play a huge part.

Our low carbon model with many of our fleet stationed at our truck teams homes reduces the driving miles to each job we attend.

Our total carbon emissions are completely offset as a result of the 43,920 trees that we have planted across three UK based forests.



Highlights



<10 miles
to each job
and decreasing



43,920
Trees planted across
three UK forests



Clearabee's Environmental Reports

Scope 1 and scope 2 emissions.



Scope 1 Emissions

CO₂

2,198,413 KG

(2198.413 Tonnes)

NO_x

27,323 KG

(27.323 Tonnes)



Scope 2 Emissions

CO₂

29,401 KG

(29.401 Tonnes)

NO_x

173.24 KG

(0.17324 Tonnes)



Clearabee's Environmental Reports

Energy consumption and renewable energy.

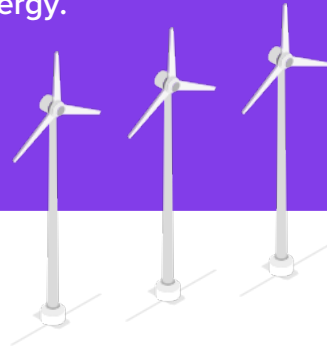


Total Energy Consumption

Electricity

142,000
KWH

(142 MWH)



Total Renewable Energy – backed by British Gas Renewable Energy Guarantee

Electricity

142,000
KWH



Total Energy Consumption

Diesel

825990.21 Litres



Clearabee's Environmental Reports

Total air pollutants of carbon dioxide and nitrogen oxide.



Carbon Dioxide Total

2,227,814 KG

(2227.814 Tonnes)



Nitrogen Oxide Total

27,496.24 KG

(27.49624 Tonnes)



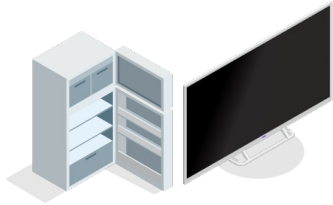
Total Air
Pollutants

CO2 & NOx Combined
**2,255,310.24
KG**

(2255.31024 Tonnes)

Clearabee's Environmental Reports

Hazardous waste and non-hazardous waste.



**Total Weight
Hazardous Waste**

Hazardous Waste

200kg

(0.2 Tonnes)



**Total Weight
Non-Hazardous Waste**

Non-Hazardous Waste

**10kg
Per Week**

(520kg per annum)



Total Weight Waste Recovered

Total Weight

8kg per week (416kg per annum)

80%



Clearabee's Environmental Reports

Our scope 1 target to reduce our GHG emissions.

Our Scope 1 Target

Our target for Scope 1 emissions is the absolute reduction averaged per collection of 2% per year.

Target Status

We are currently on track to achieve our target in 2024.



How?

-  Improved routing, due to the implementation of a new improved routing algorithm.
-  Improved arrangement of multi and single truck teams.
-  Increased use of light weight AL-KO Chassis Euro 6 vehicles.



Clearabee's Environmental Reports

Our scope 2 target to reduce our GHG emissions.

Our Scope 2 Target




Our Scope 2 target is the absolute reduction per tonne of waste processed by 2% per year.

Target Status

We are currently on track to achieve our target in 2024.



How?

-  Improved loading efficiency by investment of new materials handlers coupled with improved techniques.
-  Reduced line run up and run down profiles.
-  Enhanced pre sorting procedures to reduce load and empty running.



Offsetting Our Carbon Emissions



Nether Kidston

Nether Kidston is Clearabee's first woodland carbon project. Located south of Edinburgh.



6,544
Trees



4.09
Hectares



Spring
2017 planted



1,886
Tonnes of CO₂ offset



Sheriff Park

The Sheriff Park project sits alongside the West Coast Main Line, near the village of Great Strickland.



7,655
Trees



5.82
Hectares



Spring
2018 planted



2,153
Tonnes of CO₂ offset



Third Forest

Helen's wood near Sunderland...



24,250
Trees



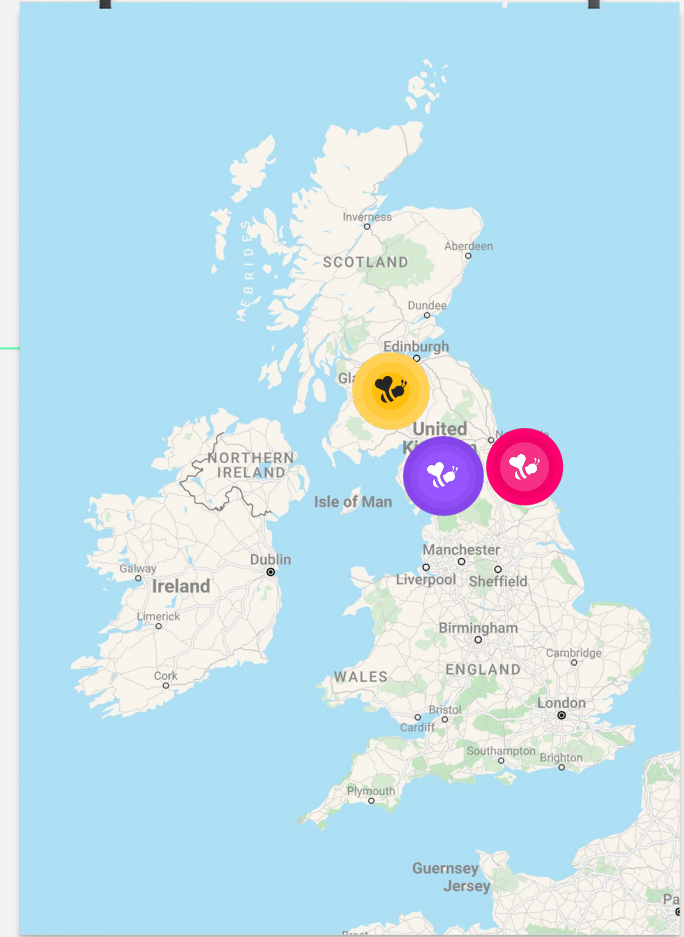
10.25
Hectares



Spring
2021 planted



7,272
Tonnes of CO₂ offset





clearabee.co.uk

Clearabee Limited, 11 Nobel Way, The Hub, Birmingham B6 7EU

Company Registration
07938514

VAT Registration
141 0827 45

Waste Carriers Licence
CBDU61392

